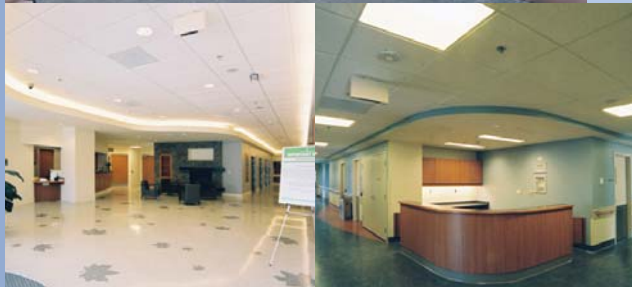




Runnymede Healthcare Centre Redevelopment Toronto, Ontario

A F P



Client

Infrastructure Ontario

Architect

Stantec Architecture

Project Completion Date

July, 2010

Type of Contract

Build and Finance

Project Value

\$65,000,000

Project Description

The construction was completed in 2 phases: Phase 1, construction of the new hospital; Phase 2 included the move into the new facility and demolition of the existing hospital building to allow completion of the landscaping and parking areas.

The new facility is a state-of-the art, 200 bed hospital and facilitates the specialized level of long term chronic care that Runnymede's patients require. The hospital has been designed as a brick clad building with a double courtyard. The upper 3 floors have been designated as nursing and care floors. The main floor has been dedicated to administration and therapy departments, and the basement has been assigned to support services as well as building services equipment. Clinical and medical services have been greatly enhanced to include a full range of therapeutic services, physiotherapy, occupational therapy, communication and swallowing therapy, respiratory therapy, audiology, customized dietary programs, activation and recreation activities, social services and around the clock professional nursing and medical care.